

GFT-X 4.0

Multifunctional Gripping Force Tester

Wireless gripping force measuring

Ordering overview and technical data

Standard equipment with GFT-X 4.0

Case with:

- Large Multi Device Tablet.
- Measuring head M3 (2 and 3 jaws) for jaw chucks with extensions and loading device.
- Torx-key T15 and spare screws.
- Bracket with magnet for measuring of speed.
- Loading cable with USB port.
- USB cable for Tablet.
- Adapter for USA, UK and Southern Europe.

Ordering data

GFT-X 4.0 case incl. Tablet, Measuring head M3 (2 and 3 jaws) Id. No. 206844

Option:

Measuring head M1 (for collet chucks)	Id. No.	207257
Measuring head M2 (for collet chucks)	Id. No.	207258
Measuring head M3 (2 and 3 jaws)	Id. No.	207074
Measuring head M4 (2 and 3 jaws, high-precision)	Id. No.	207259
Measuring head M3 (6 jaws)	Id. No.	207586
Measuring head M4 (6 jaws, high-precision)	Id. No.	207587



Display software PC / Laptop

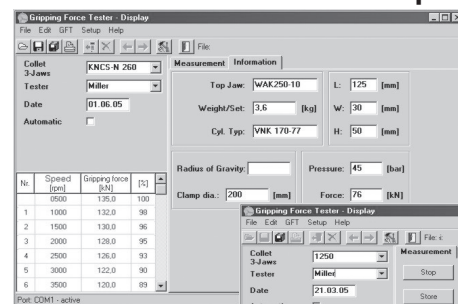
- The data transfer is via an USB interface.
- The software can be run under all standard windows systems.

Input

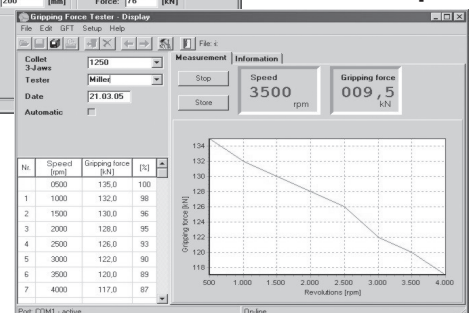
- Automatic measuring of the data (gripping force - speed).
- The number of measuring steps can be programmed free.

Output

- Table gripping force / speed.
- Diagram gripping force / speed.



Input



Output

Technical data

Tablet	
Display / Grip force F – speed	Display in kN / lbf - r.p.m
Data transfer	Bluetooth 4.0
Power supply / Transformer	100 / 240 V AC, 50 to 60 Hz
Distance Tablet / Measuring head	1-4 m (appr.)
Interface PC / Laptop	USB 2.0
Operating temp.	0 to 40° (32°-100 °F)
Protection class	IP 67

Warning: Machine door must be closed while measuring head is rotating!

Measuring heads				
	Measuring head M1	Measuring head M2	Measuring head M3	Measuring head M4
Application	collet Ø 18	collet Ø 42	chuck 2 / 3 or 2 / 3 / 6 jaws	
Clamping diameter	18 mm	42 mm	72 to 108 mm	72 to 108 mm
No. of jaws	collet 3 x slotted	collet 3 x slotted	2 and 3 jaws / 6 jaws	
Power supply	internal rechargeable capacitor			
Capacity of power supply	ca. 1.5 h at 50 % d.c.			
Data transfer	Bluetooth 4.0			
Range / gripping force F max.	0 to 75 kN	0 to 120 kN	0 to 180 kN (2-jaws) 0 to 270 kN (3 / 6-jaws)	0 to 30 kN (2-jaws) 0 to 45 kN (3 / 6-jaws)
Speed r.p.m	<10.000 r.p.m.	<8.000 r.p.m.	<6.000 r.p.m.	<6.000 r.p.m.
Accuracy (F / r.p.m)	<5% / <1% fsr	<5% / <1% fsr	<3% / <1% fsr	<1.5% / <1% fsr