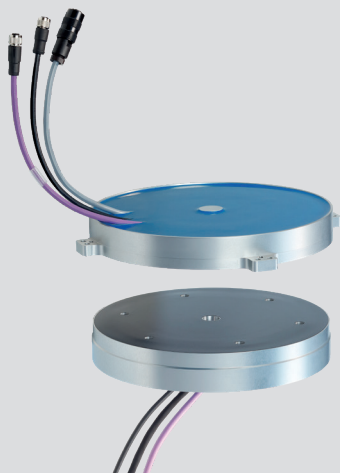


Wireless transmission of energy and data

Radial coupler



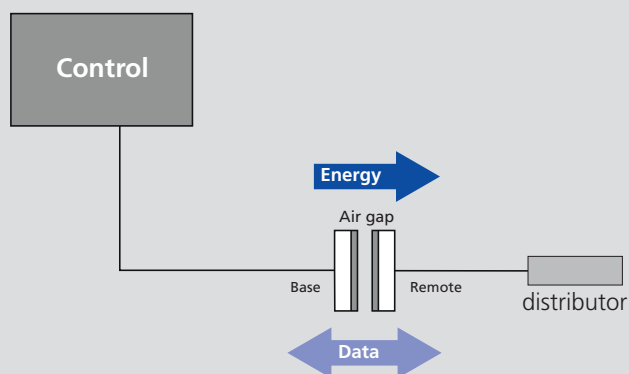
Application/customer benefits

- Wireless radial transmission of energy and data between rotating and stationary components
- Connection from mechatronic clamping systems (e-motion line) within machine tools
- Ready for Industry 4.0
- Free from wear and maintenance

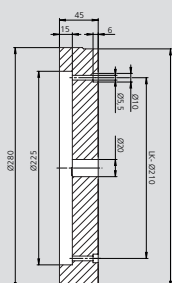
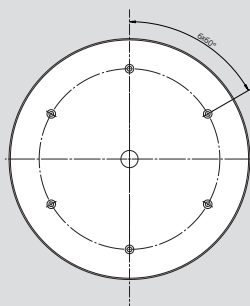
Technical features

- Supply voltage 24 V \pm 10%
- Transmission of energy: 60 V / 1800 W (40 A)
- Transmission of data 2 x BUS and 2 signal outputs analog and digital (bidirectional)
- Diameter 280 mm
- Air gap up to 4 mm
- Inverse-polarity protection (base), short-circuit proof (remote)
- Protection class: IP 67
- Id. No. Base: 208004
- Id. No. Remote: 208005

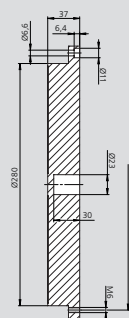
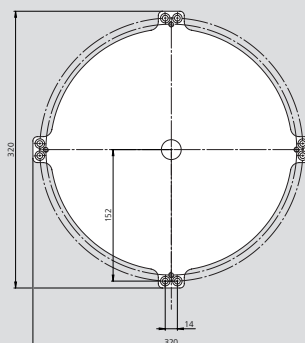
Block diagram:



Base:



Remote:



Subject to technical changes.
For more detailed information please ask our customer service.