

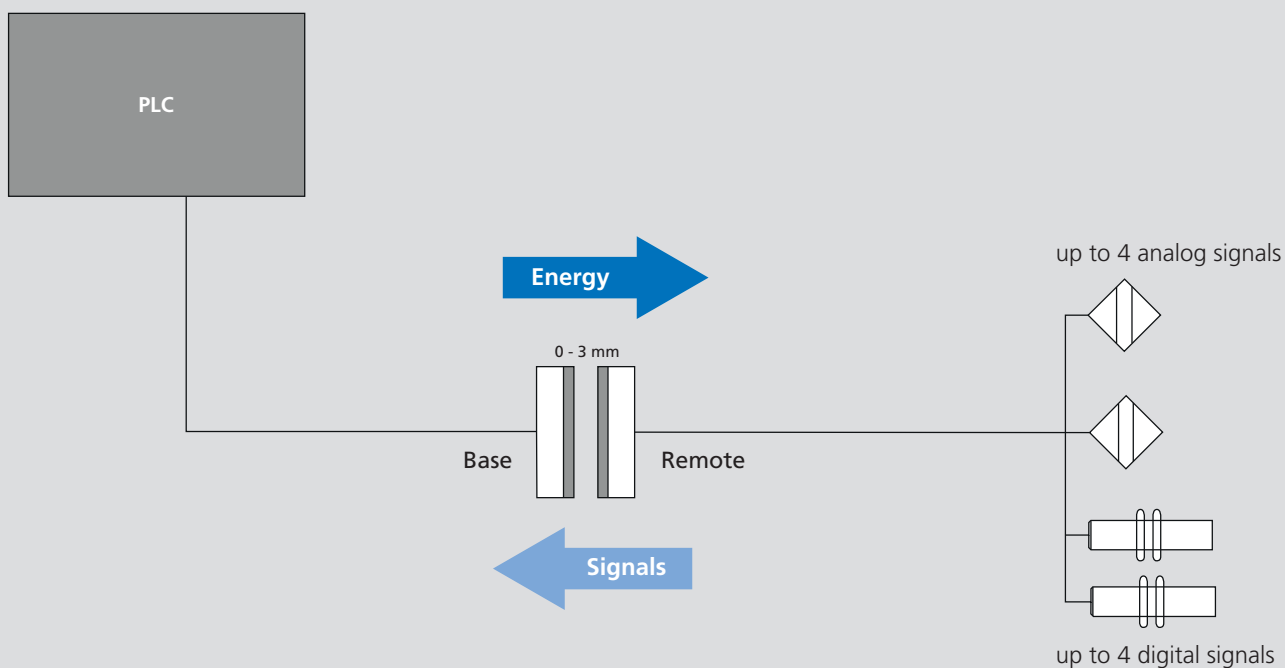
Application/customer benefits

- Contact free, safe transmission of energy and signals between moving / rotating and stationary components
- Application examples: Robotics, slip ring replacement
- Dynamic Pairing
- Wear and maintenance free

Technical features

- Operating voltage $24\text{ V} \pm 10\%$
- Transmission distance 0 - 3 mm
- Transmission of energy: $24\text{ V} / 2.5\text{ W}$ (100 mA)
- Transmission of signals: 4 analog signals (0 - 10 V) / 4 digital signals (PNP)
- Inverse-polarity protection (base), short-circuit proof (remote)
- Protection class: IP 67
- Id. No. Base: 0E010974
- Id. No. Remote: 0E010975

Block diagram:

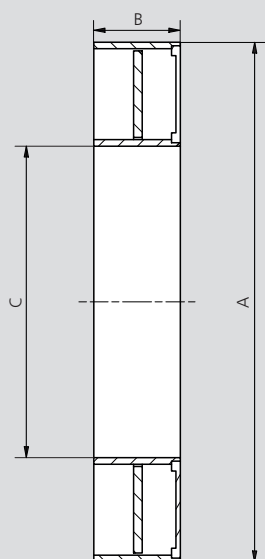


Subject to technical changes.
For more detailed information please ask our customer service.

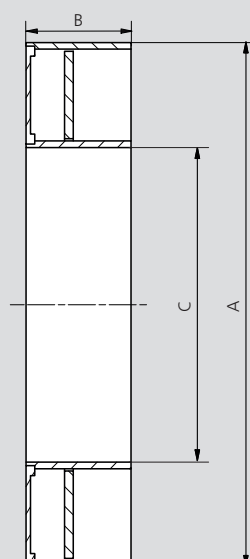
- Stationary Unit - Base
- Mobile Unit - Remote

Axial coupler

Base:



Remote:



Subject to technical changes.
For more detailed information please ask our customer service.

Inductive coupling system F60-4/4A

SMW-electronics Type		Base	Remote
Id. No.		0E010974	0E010975
A	mm	Ø 60	
B	mm	10	12
C	mm	Ø 36	
Housing material		POM, PA66, PC GF 30%	
Protection class		IP 67	
Operating temperature		0° C ... +60° C	
Storage temperature		-10° C ... +70° C	
Transmission distance		0 mm ... 3 mm	
Operating voltage		24 V ± 10% DC	-
Output voltage		-	24 V ± 10% DC
Power consumption (Base)		< 300 mA	-
Power output (Remote)		-	< 100 mA
Overload protection / short circuit protection		✓	✓
Residual ripple		-	≤ 200 mV
Reverse polarity protection		✓	-
Data-Valid Output		0 / 24 V	-
Ready delay		≤ 100 ms	